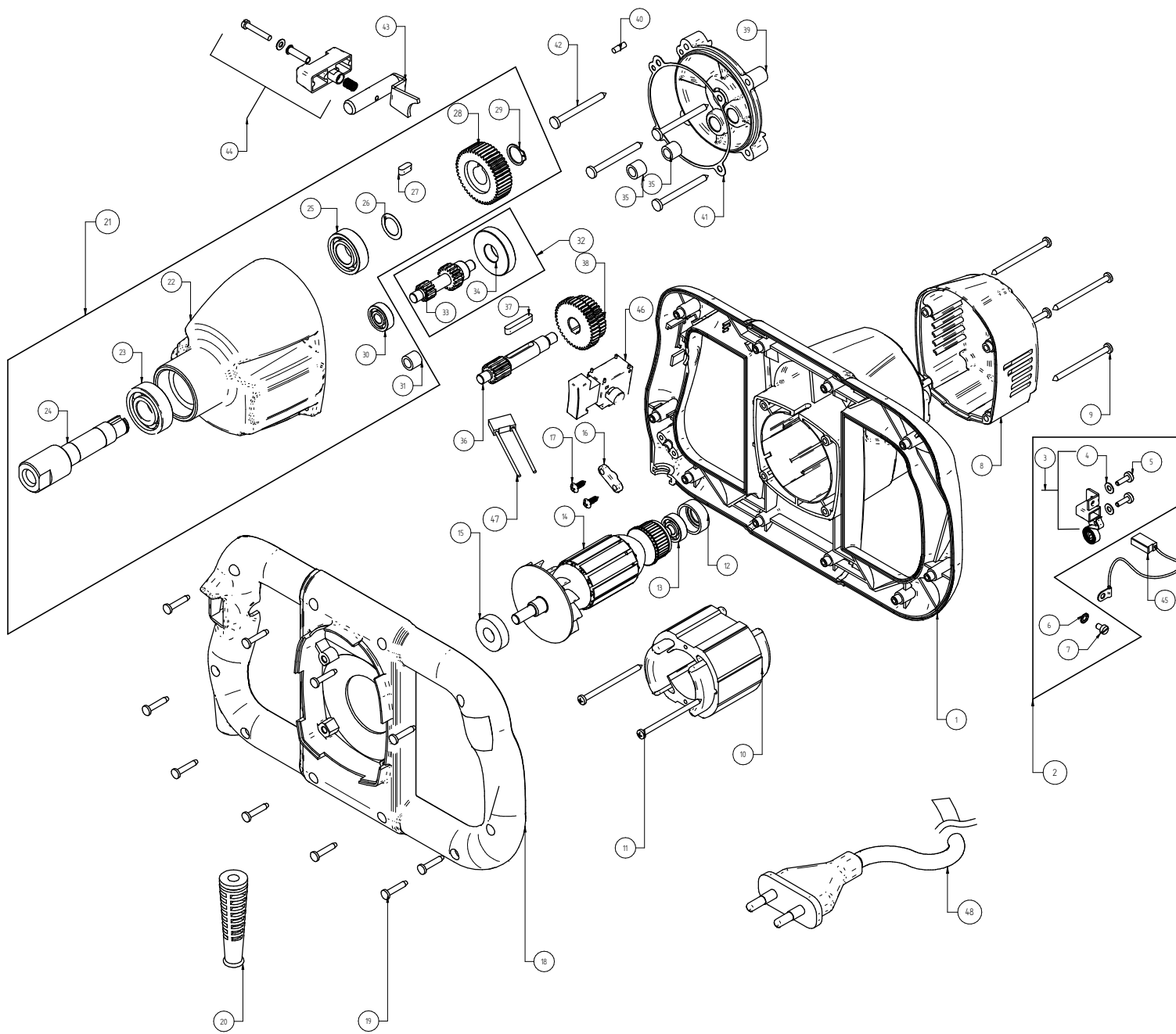


MXT100-2



Sr.no.	Part Name	Part No.	Qty.
1	Field Case	7731N200	1
2	Brush Holder SA total	319935	2
3	Brush Holder SA (209902)		2
4	Spring washer M4 (101706100)		4
5	CH screw M4x12 (161710100)		4
6	Star Washer M4 (211730)		2
7	CH screw M4 x 6 (201702)		2
8	Back Cover	7731N240	1
9	Self Tap Screw 3.9 x 60	201703	4
10	Field SA	319919	1
11	Self Tap Screw 3.9 x 65	181732	2
12	Bearing Cap	771C6315	1
13	Bearing 608 (8-22-7)	110902101	1
14	Armature SA	319955	1
15	Bearing 6001 2RS (12-28-8)	310902	1
16	Cord Clamp	310401	1
17	Self Tap Screw 4.2x15	161709100	2
18	Air guiding ring	7731N140	1
19	Self Tap Screw 4.2 x 22	311703	10
20	Cord Protector	771C6255	1
21	Gear case SA	319936	1
22	Gear case (773C1400)		1
23	Ball bearing_6203-2RS_17-40-12 (190903)		1
24	Spindle (773C1420)		1
25	Ball bearing_6003 2 RS_17-35-10 (190905)		1
26	Washer 15/22 x 0.2 (311704)		1
27	Key A5x5x12 (80200601)		1
28	Spindle Gear (71323430)		1
29	EXT.Circlip 15/1 A TYPE (121765100)		1
30	Bearing 608_8-22-7 (110902101)		1
31	NRB HK0810 (250901)		1
32	Intermediate Gear SA	319937	1
33	Pinion Shaft (71323500)		1
34	Intermediate Gear (7132A470)		1
35	NRB HK0810	250901	2
36	Shaft for Gear block	773C1460	1
37	Key (A5x5x28)	80200602	1
38	Gear Cluster	71323440	1
39	Gear Case Cover	7731N610	1
40	Dowel Pin 4x 10	311702	1
41	Gasket	773C1620	1
42	Self Tap Screw 4.8x55	311701	4
43	coupling bolt SA	129945100	1
44	Gear changer SA	129946100	1
45	Carbon Brush SA	580700013	2
46	Switch	311301	1
47	Supressor (0.47 μ Fx2)	111306101	1
48	Cable SA (2 Corex1mm2x3.1 Mtr.)	319903	1

PART NO.	REV:
311408	4

★ PARTS NOT SHOWN IN FIG.