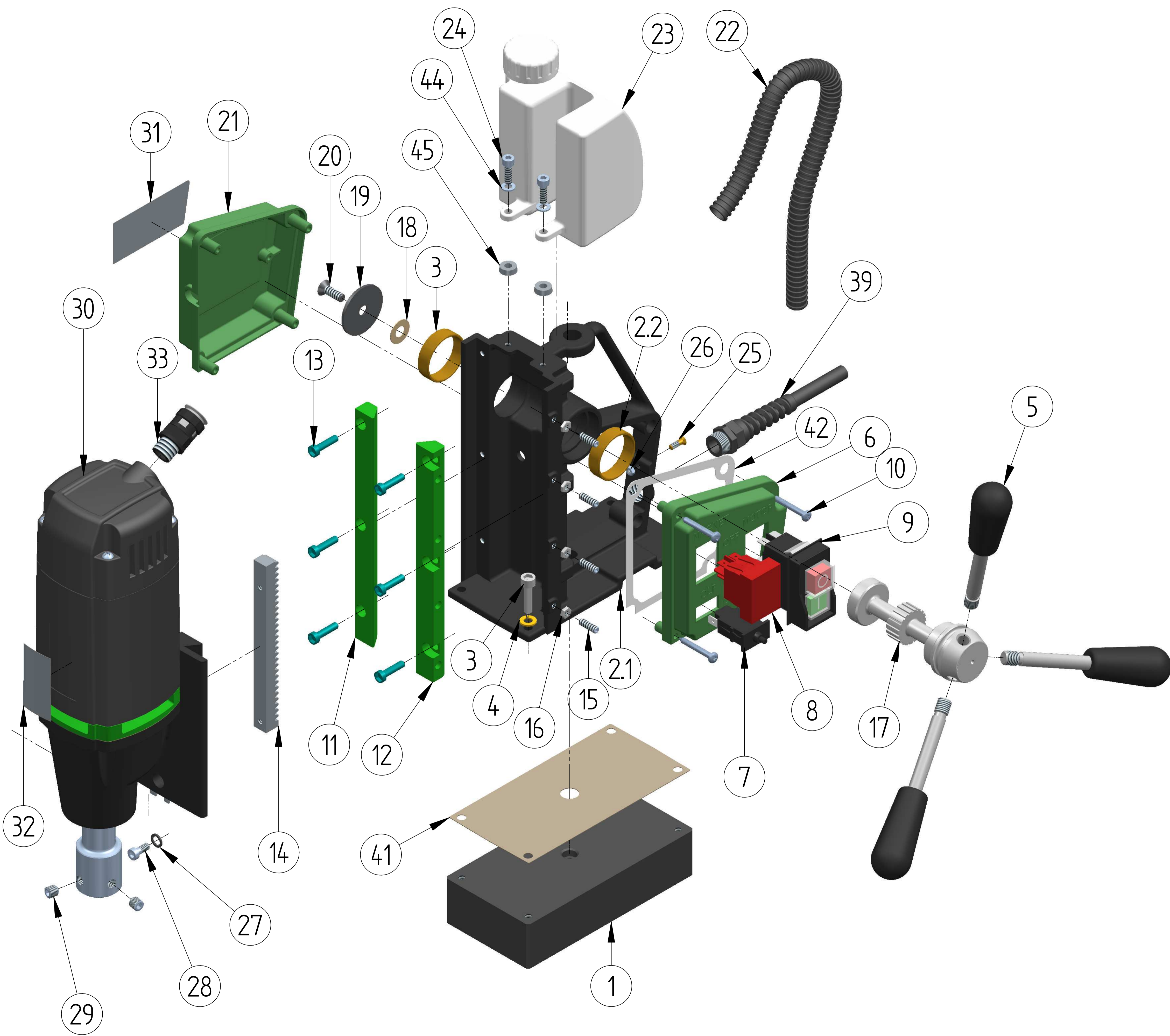


KBM 35X



Sr.No.	PART NAME	PART No.	QTY
1	Base SA	539905	1
2	Main body SA	539906	1
2.1	Main Body (530104)		1
2.2	Bush (530209)		2
3	SH Screw M6 x 25	121756100	4
4	Spring washer M6	101702100	4
5	Handle lever SA	539903	3
6	Switch plate	530401	1
7	Over load protection switch 5 amp	531302	1
8	Dust proof rocker switch	211313	1
9	Power protection switch	101320100	1
10	PH self tap screw 4.2 x 32	531701	4
11	Guide strip left	530107	1
12	Guide strip right	530106	1
13	SH Screw M5 x 25	121763100	6
14	Rack	530207	1
15	Grub screw M5 X 16 cup point	211702	4
16	Nut M5	101760100	4
17	Pinion shaft	530236	1
18	Lock foil	210301	1
19	Spindle cap	530210	1
20	CS screw M6 x 16	211705	1
21	Switch plate cover	530402	1
22	Cable conduit	211306	0.42 Mtr.
23	Coolant bottle SA	539902	1
24	SH Screw M5X16	411707	2
25	CS brass screw M4 X 16	531710	1
26	Nut M4	101728100	1
27	Int. tooth lock washer M5	101739100	2
28	SH M5 X 12 DIN 6912	531703	2
29	Grub screw M8 X 8	10069	2
30	Drive Unit - KBM 35 X	539908	1
31	Specification sticker	531403	1
32	FC front sticker	531404	1
33	Pg 9 gland	211309	1
34	Belt clamp SA *	219911	1
35	Guide pin 8 X 109 MM *	400248	1
36	Guide pin 6 X 108 MM *	400245	1
37	Diode *	211315	1
38	Wire guide *	530406	1
39	Spiral gland M16	109909102	1
40	Moulded cable _ 3 core 1mm sq. _ 3.1 mtr.*	211305	1
41	Main body gasket	530303	1
42	Switch plate gasket	530302	1

PART NOT SHOWN - ☆

PART NO.	REV:
531402	04