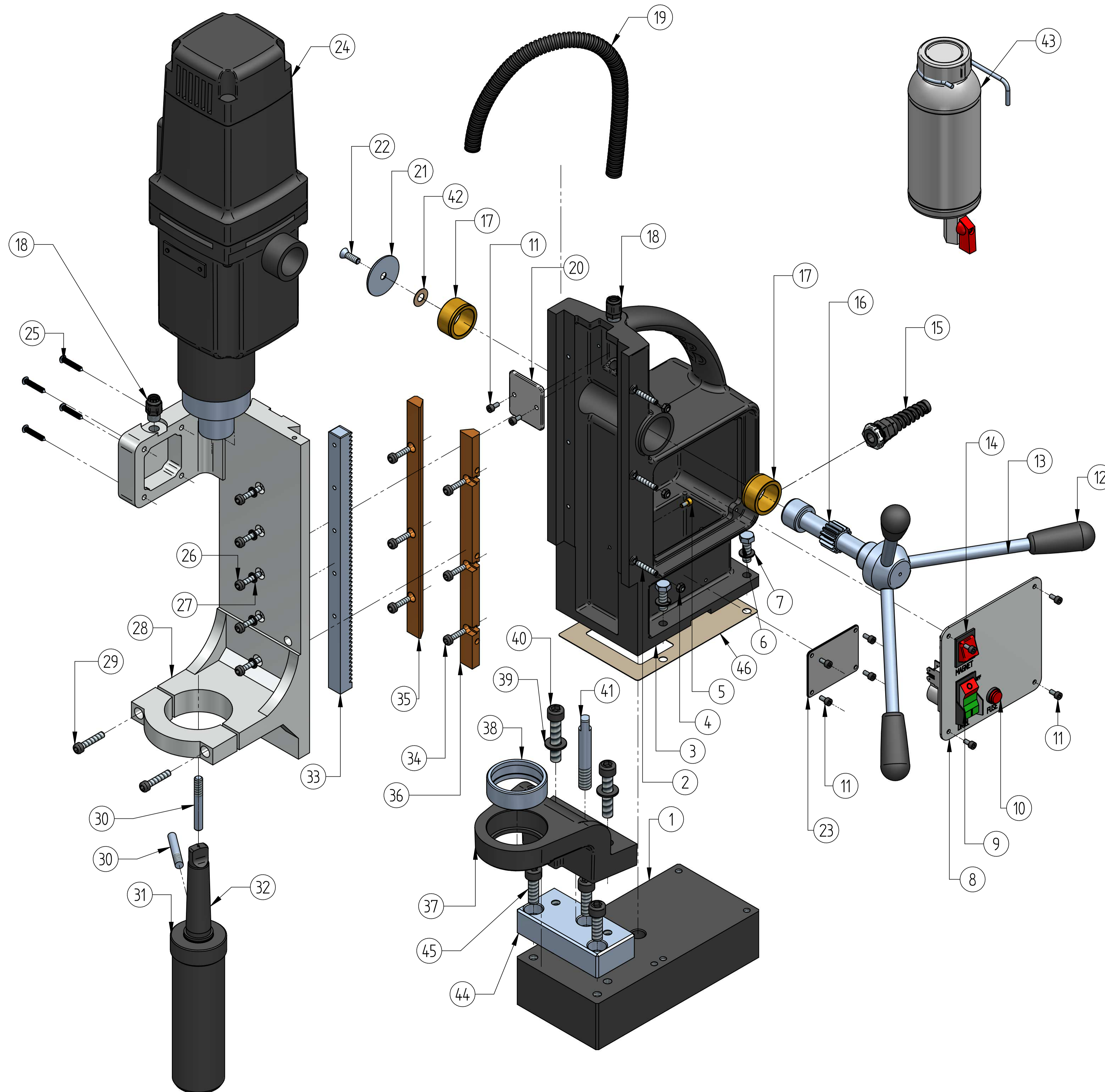


KDS 85-3 TYPE II



Sr.no.	Part Name	Part No.	Qty
1	Base SA	289901	1
2	SH Grub Screw M5 x 20_Round end	211701	3
3	Main body	280113	1
4	Lock nut M5	101760100	3
5	Earthing Screw	101729100	1
6	Hex Head Screw M8x25	281706	4
7	M8 Spring washer	101710100	4
8	Switch Plate	400202	1
9	Power protection switch	101320100	1
10	Fuse 15 amp	281304	1
11	SH screw M4 x 8	101758100	10
12	Handle lever SA	289904	3
13	Handle lever (280205)		3
14	Switch Red	101302100	1
15	Spiral gland	109909102	1
16	Spindle	280202	1
17	Spindle bush	280203	2
18	PG9 Gland	211309	2
19	Cable conduit	211306	0.55
20	Cord Clamp	280402	1
21	Spindle cap	280208	1
22	Spindle Lock countersunk screw M6 x 15	211705	1
23	Instruction plate	282005	1
24	Drill Unit	EHB 32/3	1
25	Self Tapping Screw 4.8x25	101745100	4
26	SH Screw M5 X 25	101726100	5
27	Int.tooth lock washer M5	101739100	5
28	Guide Bed machining	400104	1
29	SH screw M6 x 30	101750100	2
30	Vertical Retainer	120242100	2
31	Sleeve housing Type 2	120231107	1
32	MT3 sleeve for 32 wldon	100232100	1
33	Rack REL	280250	1
34	SH SCREW M5 x 20	281701	6
35	Gib Left side	280110	1
36	Gib Right side	280111	1
37	NRB bracket	280119	1
38	NRB 50-58-20	100901100	1
39	Plain washer M10X2 THK.	281707	2
40	SH screw M10 x 50	281720	2
41	Threaded Pin	280252	1
42	Lock foil	210301	1
43	Coolent SA	129935100	1
44	NRB SUPPORT PLATE REL	280251	1
45	SH screw M10 x 30	191706	3
46	Main body gasket	280304	1
47	Belt clamp SA *	219911	1

* PARTS NOT SHOWN IN FIG.

PART NO.
401401

REV:
D4