

Paint Mixer MXT 80, MXT 80.1



Original Instructions



Read instructions before operating Magnetic Core Drilling Machine.



EIBENSTOCK

P O S I T R O N



MXT 80



MXT 80.1

PRIOR TO USE :-

Please read these operating and safety instructions carefully and completely. For your own safety, before using this Paint Mixer check that the voltage is correct and that all handles and parts are firmly secured. If you are uncertain about any aspect of using this Paint Mixer, contact your Dealer.

**Appropriate Use**

The tool is designed for use in mixing paint, glue, tile cement and other media in batches up to about 20 kg. Do not exceed the above mentioned diameters for baskets. Otherwise, the tool could be damaged and lead to the loss of the warranty.

For additional safety instructions, read general safety rules from the book provided with this operational manual.

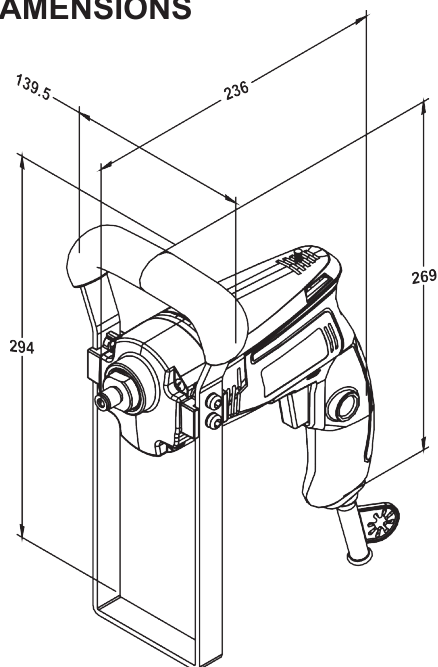
TABLE OF CONTENTS

1. Introduction	1
2. Overall Dimensions	2
3. Technical Specification.....	3
4. Applications of Stirring Rods.....	4
5. General Safety Rules.....	6
6. Mixer Safety Warning.....	8
7. Assembly & Operation	9
8. Maintenance	10

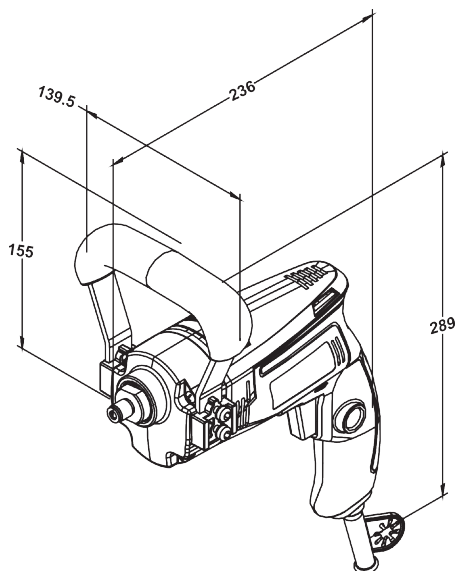
NOTE

- As our engineering is striving for the constant research and development to improve the quality, shape or specification of our product can be changed without prior notice.

2. OVERALL DIMENSIONS



MXT 80



MXT 80.1

Technical Characteristics

Paint Mixer MXT 80

Rated Voltage	230 V ~
Power Input	650 W
Rated Current	3 A

Frequency	: 40 - 60 Hz
Max. Basket Diameter	: 100 mm
with Hole Saw into Plaster Board	: 82 mm
with Drill Bit into Wood	: 20 mm
Thread Connection	: 1/2" 20GANG with Connecting piece M14
Protection Class	: II
Degree of Protection	: IP 20
Weight	: about 3.0 kg
No Load Speed	: 0 – 800 rpm

Supply

MXT 80 Mixer with assembly set, stirrer connecting piece, stirrer and operating instructions in a set cardboard box.

Application for Indented Purpose

The tool is designed for use in mixing paint, glue, tile cement and other media in batches up to about 20 kg. Do not exceed the above mentioned diameters for baskets. Otherwise, the tool could be damaged and lead to the loss of the warranty.

Safety Instructions



Safe work with the machine is only possible if you read this operating instruction and the safety instructions completely and follow the instructions contained strictly.

Additionally, the general safety instructions of the leaflet supplied with the tool must be observed. Prior to the first use, the user should absolve a practical training.

Applications of the stirring rods

S Disc stirring rod, galvanised

The stirring rod for liquid media for use with high-speed tools. Quick and smooth running mixing.

R Round stirring rod, galvanised

The stirring rod for liquid and viscous media, e.g. wall paints for inside and outside, emulsion paints, lacquers, zinc dust paints, mineral paints, silicate paints, cement paints, minium, chemicals, bitumen, casting compounds, laitances.

W Helicon ribbon stirring rod, galvanised

The powerful stirring rod for sticky and tough materials e.g. prefab plaster and mortar, adhesive mortar, preparation binder, gypsum, lime, cement facing, screed, concrete, tile cement, bonding, pastes, granulates, quartz-filled epoxy resins.

M Mortar stirring rod, galvanised

The particularly robust stirring rod for heavy and highly viscous materials, e.g. prefab plasters and mortar, lime, concrete, cement, screed, filling compound, insulating plasters, quartz filled epoxy resins.

MGV Mortar stirring rod, stainless steel

The stainless steel stirring rod with high durability is particularly suitable for abrasive materials and fodder. Please check suitability if the material contains acids or caustics !

LG Glue stirring rod, galvanised

The stirring rod especially for sticky media is particularly suitable for epoxy resin components, concrete coatings, adhesive materials and filling compounds.

RP Mixing paddle, galvanised

The mixing paddle for heavy materials is suitable for bitumen, clay, thick-film, emulsions and sealing materials. The RP 120 is stainless steel.

Right hand spiral (Standard) :

Stirring rod pulls material from the bottom few air inclusions, easy guiding for tough materials.

Left hand spiral (MG xxx L) :

Stirring rod pushes material from top to the bottom - less splash during mixing for media of low viscosity



Material	S	R	W	M	MGV	LG	RP
Wall Paint	x	x					
Emulsion paint	x	x					
Lacquer	x	x					
Zinc dust paint		x					
Mineral paint		x					
Silicate paint	x	x					
Red lead coat	x	x					
Chemicals	x	x			x		
Bitumen		x				x	x
Grouting Compounds		x		(x)		x	
Cement laitance	x	(x)		(x)		x	
Plaster / Chalk			(x)	x			
Adhesive mortar			x	x			
Ready blended screedmortar			x	x		(x)	
Glue			x	x		x	
Concrete			(x)	x		(x)	
Tile adhesive			x	x		x	
filling compound			x	x			
Ready mixed filler							
Granules / Plaster			x	x	x		
Thermal insulating plaster			(x)	x			x

(x) limited suitability



General Safety Rules



WARNING! Read all instructions. Failure to follow all instructions listed below may result in electric shock, fire and/or serious injury. The term “power tool” in all of the warnings listed below refers to your mains operated (corded) power tool or battery operated (cordless) power tool.

SAVE THESE INSTRUCTIONS.

1) Work area

- a) **Keep work area clean and well lit.** Cluttered and dark areas invite accidents.
- b) **Do not operate power tools in explosive atmospheres, such as in the presence of flammable liquids, gases or dust.** Power tools create sparks which may ignite the dust or fumes.
- c) **Keep children and bystanders away while operating a power tool.** Distractions can cause you to lose control.

2) Electrical safety

- a) **Power tool plugs must match the outlet. Never modify the plug in any way. Do not use any adapter plugs with earthed (grounded) power tools.** Unmodified plugs and matching outlets will reduce risk of electric shock.
- b) **Avoid body contact with earthed or grounded surfaces such as pipes, radiators, ranges and refrigerators.** There is an increased risk of electric shock if your body is earthed or grounded.
- c) **Do not expose power tools to rain or wet conditions.** Water entering a power tool will increase the risk of electric shock.
- d) **Do not abuse the cord. Never use the cord for carrying, pulling or unplugging the power tool. Keep cord away from heat, oil, sharp edges or moving parts.** Damaged or entangled cords increase the risk of electric shock.

- e) **When operating a power tool outdoors, use an extension cord suitable for outdoor use.** Use of a cord suitable for outdoor use reduces the risk of electric shock.

3) Personal safety

- a) **Stay alert, watch what you are doing and use common sense when operating a power tool. Do not use a power tool while you are tired or under the influence of drugs, alcohol or medication.** A moment of inattention while operating power tools may result in serious personal injury.
- b) **Use safety equipment. Always wear eye protection.** Safety equipment such as dust mask, non-skid safety shoes, hard hat, or hearing protection used for appropriate conditions will reduce personal injuries.
- c) **Avoid accidental starting. Ensure the switch is in the off position before plugging in.** Carrying power tools with your finger on the switch or plugging in power tools that have the switch on invites accidents.
- d) **Remove any adjusting key or wrench before turning the power tool on.** A wrench or a key left attached to a rotating part of the power tool may result in personal injury.
- e) **Do not overreach. Keep proper footing and balance at all times.** This enables better control of the power tool in unexpected situations.
- f) **Dress properly. Do not wear loose clothing or jewellery. Keep your hair, clothing and gloves away from moving parts.** Loose clothes, jewellery or long hair can be caught in moving parts.
- g) **If devices are provided for the connection of dust extraction and collection facilities, ensure these are connected and properly used.** Use of these devices can reduce dust related hazards.

4) Power tool use and care

a) Do not force the power tool. Use the correct power tool for your application.

The correct power tool will do the job better and safer at the rate for which it was designed.

b) Do not use the power tool if the switch does not turn it on and off. Any power tool that cannot be controlled with the switch is dangerous and must be repaired.

c) Disconnect the plug from the power source before making any adjustments, changing accessories, or storing power tools. Such preventive safety measures reduce the risk of starting the power tool accidentally.

d) Store idle power tools out of the reach of children and do not allow persons unfamiliar with the power tool or these instructions to operate the power tool. Power tools are dangerous in the hands of untrained users.

e) Maintain power tools. Check for misalignment or binding of moving parts, breakage of parts and any other condition that may affect the power tools operation. If damaged, have the power tool repaired before use. Many accidents are caused by poorly maintained power tools.

f) Keep cutting tools sharp and clean. Properly maintained cutting tools with sharp cutting edges are less likely to bind and are easier to control.

g) Use the power tool, accessories and tool bits etc., in accordance with these instructions and in the manner intended for the particular type of power tool, taking into account the working conditions and the work to be performed. Use of the power tool for operations different from those intended could result in a hazardous situation.

5) Battery tool use and care

a) Ensure the switch is in the off position before inserting battery pack. Inserting the battery pack into power tools that have the switch on invites accidents.

b) Recharge only with the charger specified by the manufacturer. A charger that is suitable for one type of battery pack may create a risk of fire when used with another battery pack.

c) Use power tools only with specifically designated battery packs. Use of any other battery packs may create a risk of injury and fire.

d) When battery pack is not in use, keep it away from other metal objects like paper clips, coins, keys, nails, screws, or other small metal objects that can make a connection from one terminal to another. Shorting the battery terminals together may cause burns or a fire.

e) Under abusive conditions, liquid may be ejected from the battery; avoid contact. If contact accidentally occurs, flush with water. If liquid contacts eyes, additionally seek medical help. Liquid ejected from the battery may cause irritation or burns.

6) Service

a) Have your power tool serviced by a qualified repair person using only identical replacement parts. This will ensure that the safety of the power tool is maintained.

Mixer Safety Warnings

1. **Use auxiliary handle(s), if supplied with the tool.** Loss of control can cause personal injury.
2. **Hold power tool by insulated gripping surfaces, when performing an operation where the mixing accessory may contact hidden wiring or its own cord.** Mixing accessory contacting a "live" wire may make exposed metal parts of the power tool "live" and could give the operator an electric shock.
3. **Always be sure you have a firm footing.**
Be sure no one is below when using the tool in high locations.
4. **Hold the tool firmly.**
5. **Keep hands away from rotating parts.**
6. **Do not leave the tool running. Operate the tool only when hand-held.**
7. **Some material contains chemicals which may be toxic. Take caution to prevent dust inhalation and skin contact. Follow material supplier safety data.**

Save these Instructions

WARNING :

DO NOT let comfort or familiarity with product (gained from repeated use) replace strict adherence to safety rules for the subject product. **MISUSE** or failure to follow the safety rules started in this instruction manual may cause serious personal injury.

Functional Description

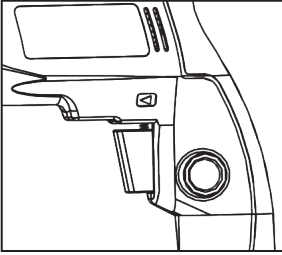
CAUTION :

Always be sure that the tool is switched off and unplugged before adjusting or checking function on the tool

Switch Action

CAUTION :

Before plugging in the tool, always check to see that the switch trigger actuates properly and returns to the "OFF" position when released. Switch can not be locked in "ON" position and maintain firm grasp on tool during operation.



1. Switch trigger

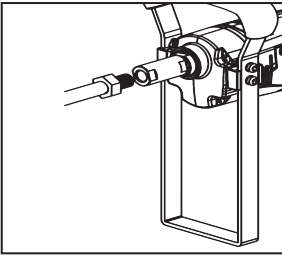
To start the tool, simply pull the switch trigger. Release the switch trigger to stop.

Assembly

⚠ CAUTION :

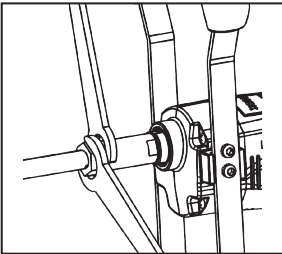
Always be sure that the tool is switched off and unplugged before carrying out any work on the tool.

Installing Stirrer Connecting Piece



1. Hex nut
2. Shaft
3. Stirrer connecting piece

Tighten the shaft into the stirrer connecting piece till the hex nut contacts with the shaft holder.



1. Wrench
2. Shaft holder
3. Wrench

Hold the shaft holder with the wrench and tighten the hex nut with the other wrench in the direction of arrow.

Operation

Mixing

⚠ CAUTION :

- Do not use to mix flammable material such as paint with thinner used as solvent. Failure to do so may cause injury.
- Mixing with the mixing blade floating out of the mixing material may cause the material to splash about.

1. Always use the top and firmly hold the tool by top grip and switch handle during operations.
2. Place the mixing blade under material fully and turn on the tool after making sure work site safety.
3. Move the mixing blade up and down during the mixing operation so that whole part of material can be mixed.
4. When finishing mixing, turn "OFF" the tool, make sure that the mixing blade has come to a complete stop and then pull it out of the vessel.

Maintenance

Machine service must be performed only by qualified personnel. When servicing a tool, use only original replacement parts. Use of unauthorized parts will void the warranty. Use of unauthorized parts or failure to follow maintenance instructions may create risk of electric shock or injury.

Machine service sheet is provided with this operation manual.

Pull out the plug prior to cleaning. Use dry compressed air to clean the motor (from the external).

In case of electrical or mechanical malfunction, immediately switch off the tool and disconnect the plug. Excessive sparking generally indicates the presence of dirt in the motor or worn out carbon brushes. Periodically check brushes for wear and replace when the reach (6mm)

Ordering replacement parts :

- Please quote the following data when ordering replacement parts :
- Type of machine
- Article number of the machine
- Identification number of the machine
- For our latest products & information please go to our website

<http://www.ep-india.in>

Disposal and recycling

The unit is supplied in packaging to prevent its being damage in transit. This packaging is raw material and can therefore be reused or can be returned to the raw material system. The unit and its accessories are made of various types of material, such as metal and plastic. Defective components must be disposed of as special waste. Ask your dealer or your local council.

△ Adjustable drilling protection is not provided, because both hands are engaged during drilling. No chance to come in contact with moving parts.

MEMO

[illegible]

MEMO

[illegible]



WARRANTY



This product is warranted for maximum period of six month from the date of purchase. This warranty is for only defective parts. If the tool becomes defective in operation due to faulty material and/or workmanship with in the warranty period, we undertake to repair the product free of charge, provided -

1. The product is to be returned at the purchaser's cost to **EIBENSTOCK POSITRON** Service Centre Or our Authorised Dealer operated Service Centre with evidence of purchase date and warranty card.
2. The product has been purchased by the user and not used for hire or commercial purpose.
3. The product has not been misused, or has not been carelessly handled or with fully damaged or damaged due to accident.
4. The product has been operated or maintained in accordance with the instructions in the maintenance manual.
5. Repairs have not been attempted by persons other than our service staff.

This warranty DOSE NOT apply to

- All normal wear & tear of parts e.g. carbon brushes, armature with heavy commutator wear, bearings, etc.
- Attachments & accessories supplied with tool.



WARRANTY CARD

Manufactured by



Works : Eibenstock Positron Elektrowerk Pvt. Ltd.

Plot No. 144, 1/2/3, KAIP Industrial Estate, Tardal.

Tal. Hatkanangle, Dist. Kolhapur, Maharashtra (INDIA)

T. : +91 7028919491, +91 7028919492

E-mail : customer.support@positronsolutions.com

Web : www.positronsolutions.com / www.ep-india.in

Product : **MXT 80, MXT 80.1**

Date of Purchase / /20

Cat No. : Sr. No. :

Name of Person / Company

Address :

..... Pin :

Type of Industry

Tel. No. : Fax :

Authorised Dealer Stamp