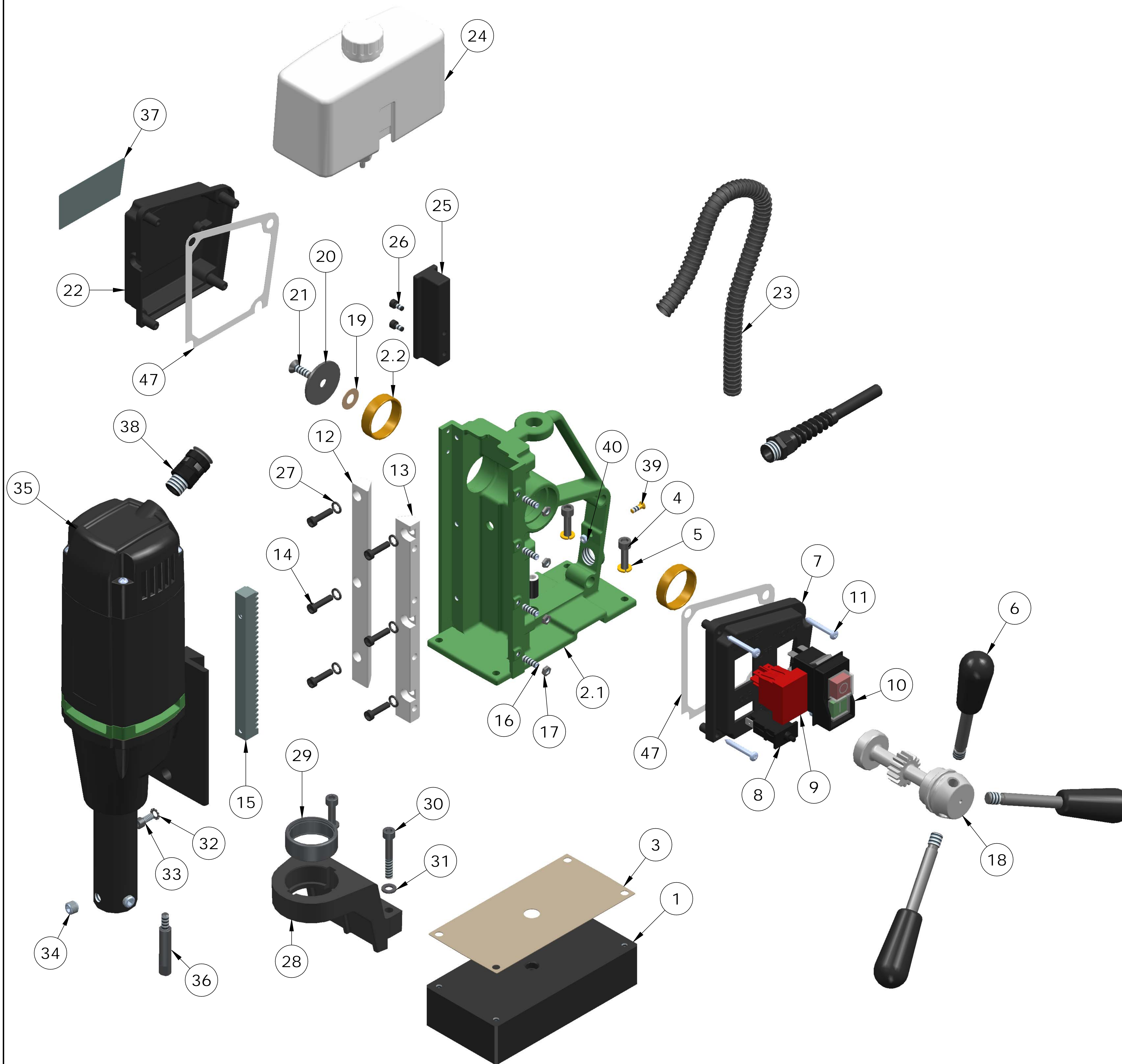


KBM 38 X



Sr.No.	PART NAME	PART No.	QTY
1	Base SA	539968	1
2	Main body SA	539923	1
2.1	Main body (530114)		1
2.2	Bush (530209)		2
3	Main body gasket	530303	1
4	SH Screw M6 x 25	121756100	2
5	Spring washer M6	101702100	2
6	Handle lever SA	539903	3
7	Switch plate	530401	1
8	Over load protection switch 5 Amp.	531302	1
9	Dust proof rocker switch	211313	1
10	Power protection switch	101320100	1
11	PH self tap screw 4.2 x 32	531701	4
12	Guide strip left	530107	1
13	Guide strip right	530106	1
14	SH Screw M5 x 25	121763100	6
15	Rack	530207	1
16	Grub screw M5 X 16 cup point	211702	4
17	Nut M5	101760100	4
18	Pinion shaft	530236	1
19	Lock foil	210301	1
20	Spindle cap	530210	1
21	CS screw M6 x 16	211705	1
22	Switch plate cover	530402	1
23	Cable conduit	211306	0.42 MTR
24	Coolant bottle SA	539958 SA	1
25	Bottle Clamp	530431	1
26	SH Screw M4X8	121761100	2
27	Int. tooth lock washer M5	101739100	6
28	NRB bracket machining	530116	1
29	NRB HK 3516	120903100	1
30	SH screw M6 x 40	121770100	2
31	plain washer M6	101709100	2
32	Int. tooth lock washer	101739100	2
33	SH M5 X 12	531703	2
34	Grub screw M10 X 8	101744100	2
35	Drive unit KBM 38X	539921	1
36	Stopper	530237	1
37	Specification sticker	531425	1
38	Pg 9 gland	211309	1
39	CS brass screw M4 X 12	531702	1
40	Nut M4	101728100	1
41	Belt clamp SA *	219911	1
42	Guide pin 8X109 MM *	400248	1
43	Guide pin 6X108 MM *	400245	1
44	Bridge Rect. Circuit *	781307	1
45	Spiral gland M16	109909102	1
46	3 PIN POWER CORD CE-1SQMM X3CORE X 3.1 MTR*	721301	1
47	Switch plate gasket	530302	2
48	Fuse 15A - CE *	201329	1

SHOWN - ☆

PART NO.	REV:
531423	5