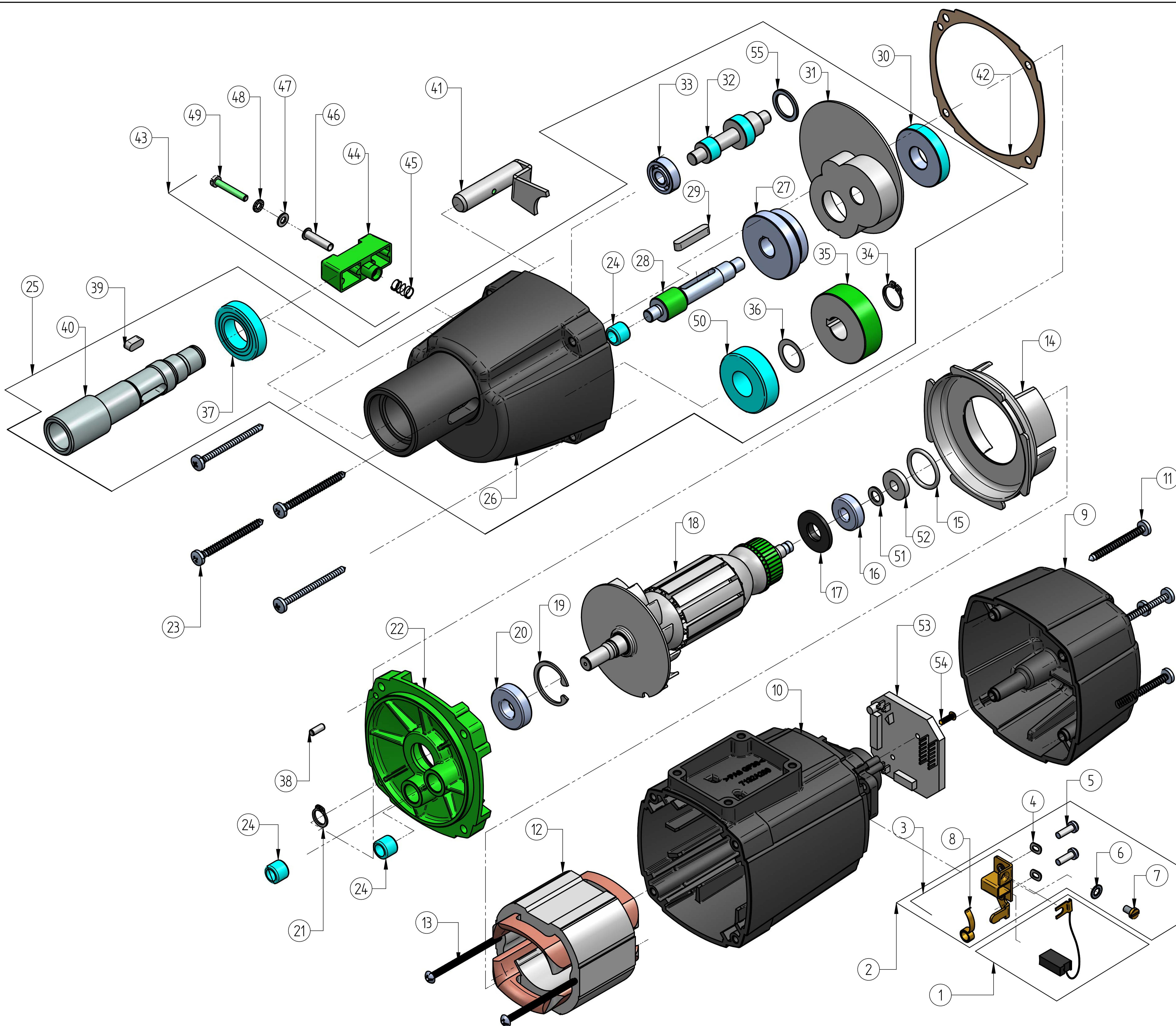


EHB 20 2.2 R/RL I 1299100100



Sr.No.	Part Name	Part No	Qty
1	Auto Cutoff Carbon Brush Pair	209942	1
2	Brush Holder SA total	319935	2
3	Brush Holder SA (209902)		2
4	Wave washer M4 TYPE B (421704)		4
5	CH screw M4x12 (161710100)		4
6	Star Washer M4 (211730)		2
7	CH screw M4 x 8 (101730100)		2
8	Flat spiral spring (200503)		2
9	Back cover	120409100	1
10	Field Case	120407100	1
11	Phillip head self tap screw 4.8x45	201716	4
12	Field SA	7432E150	1
13	CH self tap screw 3.9x60 (80201266)	201703	2
14	Baffle	7732Y140	1
15	O ring	200303	1
16	Ball Bearing (8-22-7) 608 ZZ	110902101	1
17	Dust washer	200404	1
18	Armature SA	7432E100	1
19	Circlip 28mm x 1.2 B TYPE	201704	1
20	Ball Bearing (12-28-8)6001 ZZ	190901	1
21	Circlip A11	121771100	1
22	GC Cover	7132A61A	1
23	Phillip head self tap screw 4.8x55	311701	4
24	NRB 8-12-10 HK810	250901	3
25	Gear case SA	129994100	1
26	Gear case (Black) (120181100)	-	1
27	Gear Cluster (71323440)	-	1
28	Inter shaft for gear clushter (71223460)	-	1
29	Key 5-5-28 (80200602)	-	1
30	Intermediate gear (7132A470)	-	1
31	Grease barrier (7132A625)	-	1
32	Inter pinion (71323500)	-	1
33	Ball Bearing 8-22-7 (608 ZZ) (110902101)	-	1
34	Circlip 15 x 1 A TYPE (121765100)	-	1
35	Spindle gear (71323430)	-	1
36	Washer 15/22 x 0.2 (311704)	-	1
37	Ball bearing 20-37-9 (6904-2RS)(200903)	-	1
38	Dowel 4 x 12 (211723)	-	1
39	Key 5-5-12 (80200601)	-	1
40	Spindle (71323420)	-	1
41	coupling bolt SA	129945100	1
42	Gasket	120307100	1
43	Gear changer SA	319917	1
44	Gear Shifting knob green (77324547)	-	1
45	Comp.Spring (120250100)	-	1
46	Screw Sleeve (121768100)	-	1
47	Plain washer M4 (101734100)	-	1
48	Star Washer M4 (211730)	-	1
49	CH screw M4 x 25 (121767100)	-	1
50	Ball bearing 17-40-12 (6203-2RS)	190903	1
51	Presspan Washer	82000951	1
52	Magnetic disc	80701005	1
53	PCB circuit Board	80601192	1
54	self tap screw 2.9x13	80201252	2
55	Spacer	120247100	1

PART NO. 1214113100	REV: 2
-------------------------------	------------------