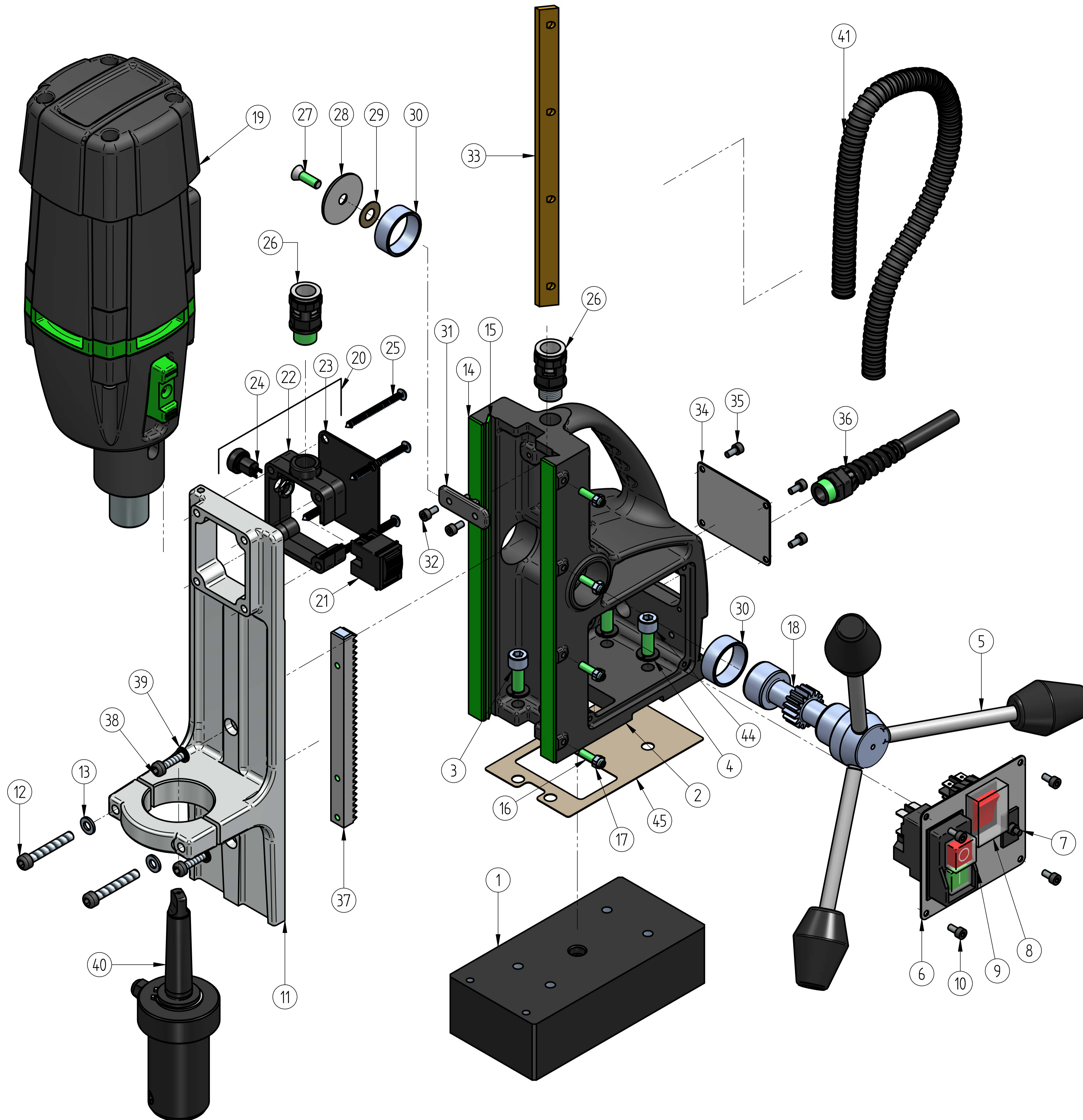


KBM 42 R/RL



Sr.No.	PART NAME	PART No.	QTY
1	BASE SA	1299114100	1
2	MAIN BODY SA	219952	1
3	SH SCREW M8 x 20	101708100	2
4	SPRING WASHER M8	101710100	4
5	HANDLE LEVER SA	219902	3
6	SWITCH PLATE SA	1299113100	1
7	OVER LOAD PROTECTOR (211316)		1
8	DUST PROOF ROCKER SWITCH (211313)		1
9	POWER PROTECTION SWITCH (211319)		1
10	SH SCREW M4x8	121761100	4
11	GUIDE PLATE MACHINING	120182100	1
12	SH SCREW M6 x 40	121770100	2
13	Plain washer M6	101709100	2
14	GUIDE STRIP 12mm	210310	2
15	GUIDE STRIP 8mm	210311	1
16	SCH GRUB SCREW M5 x 20	211701	4
17	LOCK NUT M5	101760100	4
18	Spindle	210202	1
19	DRILL UNIT EHB 20 2.2 R/RL I	1299100100	1
20	REVERSE FORWARD SWITCH SA	129998100	1
21	Reverse-forward switch (221301)		1
22	Reverse-forward switch box (120499F)		1
23	Reverse-forward switch plate (120172100)		1
24	Speed switch (73114300)		1
25	CH SELF TAP SCREW 4.8x50	121776100	4
26	GLAND PG9	211309	2
27	COUNTERSUNK SCREW M6 x 16	211705	1
28	SPINDLE CAP	210217	1
29	LOCK FOIL	210301	1
30	SPINDLE BUSH	210203	2
31	CORD CLAMP	210406	1
32	SH SCREW M4x8	121761100	2
33	GIB	210501	1
34	SPEC PLATE	1214115100	1
35	SH SCREW M4x8	121761100	4
36	SPIRAL GLAND	109909102	1
37	RACK	120209100	1
38	SCH Screw M5 X 20	281701	2
39	INT. TOOTH LOCK WASHER (M5)	101739100	2
40	MT2 SLEEVE SA	219958	1
41	CABLE CONDUIT	211306	1
42	QUICK RELEASE ARBOR SA * (OPTIONAL)	219957	1
43	COOLANT BOTTLE SA *	219912	1
44	SH SCREW M8 x 25	121756100	2
45	MAIN BODY GASKET	210318	1
46	3 PIN 16AMP POWER CORD CE-1SQMM X3CORE X 3.1 MTR *	721301	1

PART NOT SHOWN - ☆

PART NO.
1214116100

REV:
2