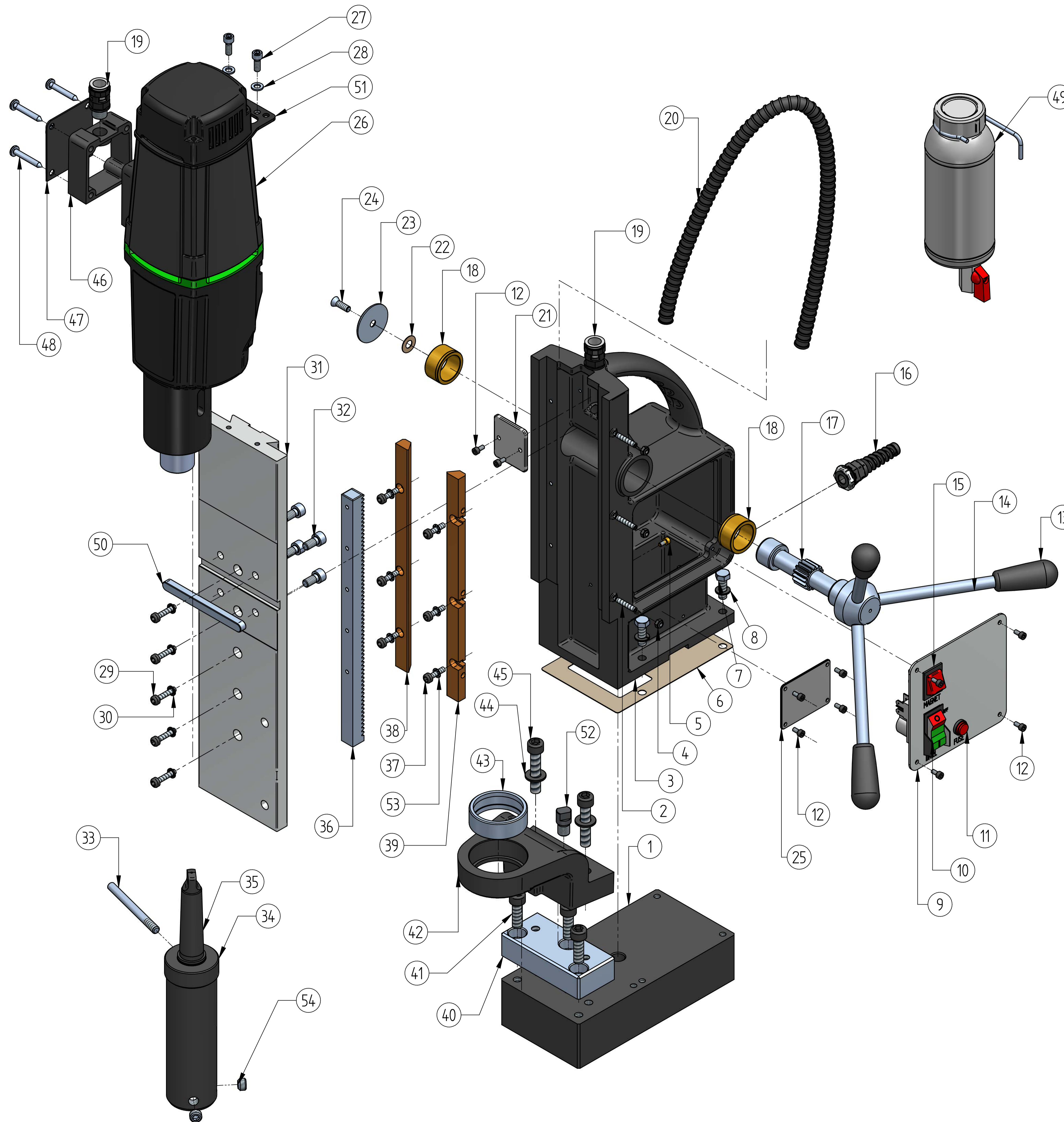


KDS 85-3 TYPE III



Sr.no.	Part Name	Part No.	Qty
1	Base SA	289901	1
2	SH Grub Screw M5 x 20_Round end	211701	3
3	Main body	280113	1
4	Lock nut M5	101760100	3
5	Brass Screw M4X8	101730100	1
6	Main body gasket	280304	1
7	Hex Head Screw M8x25	281706	4
8	M8 Spring washer	101710100	4
9	Switch Plate	400202	1
10	Power protection switch	101320100	1
11	Fuse 15 amp	281304	1
12	SH screw M4 x 8	101758100	10
13	Handle lever SA	289904	3
14	Handle lever (280205)		3
15	Switch Red	101302100	1
16	Spiral gland	109909102	1
17	Spindle	280202	1
18	Spindle bush	280203	2
19	PG9 Gland	211309	2
20	Cable conduit	211306	0.55
21	Cord Clamp	280402	1
22	Lock foil	210301	1
23	Spindle cap	280208	1
24	Spindle Lock countersunk screw M6 x 15	211705	1
25	Instruction plate	282005	1
26	Drill Unit	469901	1
27	SH M6X16	101701100	2
28	Plain washer M6	101709100	2
29	SH Screw M5 X 25	101726100	5
30	Int.tooth lock washer M5	101739100	5
31	Guide Bed machining	460103	1
32	SH screw M8 x 16	291718	4
33	Retainer	460207	1
34	Sleeve housing Type 2	120231107	1
35	MT3 sleeve for 32 wldon	100232100	1
36	Rack REL	280250	1
37	SH SCREW M5 x 20	281701	6
38	Gib Left side	280110	1
39	Gib Right side	280111	1
40	NRB SUPPORT PLATE	460206	1
41	SH screw M10 x 30	191706	3
42	NRB bracket	280119	1
43	NRB 50-58-20	100901100	1
44	Plain washer M10X2 THK.	281707	2
45	SH screw M10 x 50	281720	2
46	Drill side cap machining	400401	1
47	Cover plate	221304	1
48	Self tapping screw PH 5,5x38	421701	4
49	Coolant SA	129935100	1
50	KEY	280206	1
51	Back cover supporter	430206	1
52	Stopper	460253	1
53	Int.tooth lock washer M5	101739100	6
54	SH grub screw M12 x 8	281710	6
55	Belt clamp SA *	219911	1
56	3 Pin 16AMP Power Cord CE-1.5 SQ MM X3Core X 3.1 MTR *	721302	1

PART NO.	REV:
461402	2

* PARTS NOT SHOWN IN FIG.