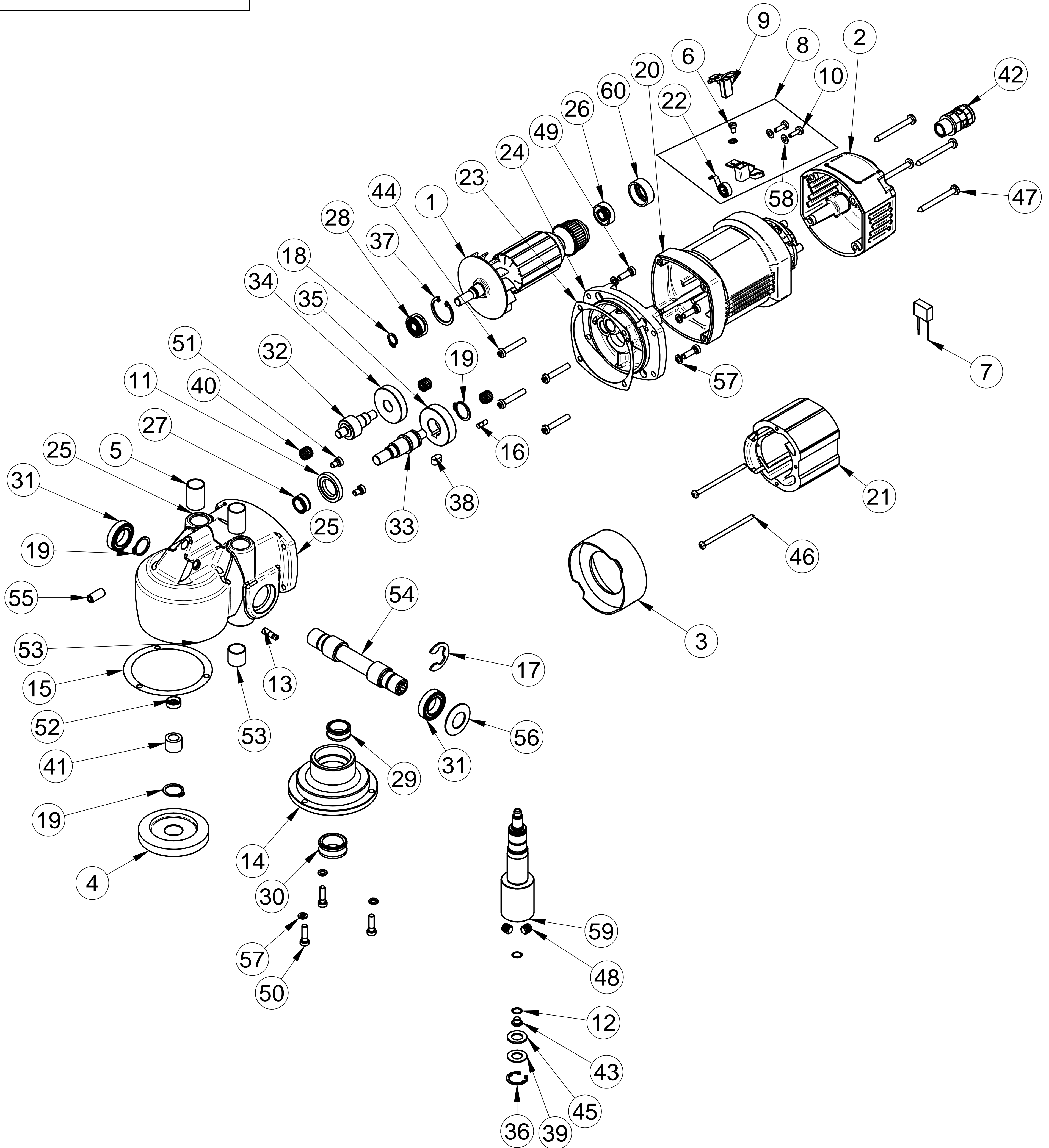


WBM 40 - DRIVE UNIT _ 230 V; SERVICE SHEET - 1 OF 2



SR. NO.	PART NAME	PART NO.	QTY.
1	ARMATURE SA	7411R100	1
2	BACK COVER	7411P240	1
3	BAFFEL	73110140	1
4	BEVEL GEAR	85000323	1
5	BIG BUSH	80420244	2
6	BRASS SCREW M4X8 (101730100)		2
7	BRIDGE RECTIFIER CIRCUIT	211310	1
8*	BRUSH HOLDER SA TOTAL (209902)	319935	2
9	CARBON BRUSH SA	580700013	2
10	CH MACHINE SCREW M4X12 (161710100)		4
11	CLAMP RING	7411R127	1
12	COMPRESSION SPRING	7411R566	1
13	COOLING FLUID CONNECTION	85000074	1
14	COVER	7412K405	1
15	DECKEL GASKET	7411R625	1
16	DOWELL 4x12	211723	1
17	EXT. CIRCLIP C -15	481707	1
18	EXTERNAL CIRCLIP - A10	111713100	1
19	EXTERNAL CIRCLIP - A17	/80201323	3
20	FIELD CASE	140407	1
21	FIELD SA	7311X150	1
22	FLAT SPIRAL SPRING (200503)		2
23	GCC GASKET	73116620 / 82000503	1
24	GCC MACHINING - SILVER	7411R610	1
25	GEAR CASE MACHINING	7411R400	1
26*	GROOVED BALL BEARING 608 2Z	110902101	1
27	GROOVED BALL BEARING 6001 2RS	310902	1
28	GROOVED BALL BEARING 6001 2Z	190901	1
29	GROOVED BALL BEARING 6003 2RS	190905	1
30	GROOVED BALL BEARING 6004 2RS	420902	1
31	GROOVED BALL BEARING 6903 2RS	480901	2
32	INTERMEDIATE SHAFT 1	7411R510	1
33	INTERMEDIATE SHAFT 2	7411R500	1
34	INTERMEDIATE WHEEL 1	7411R470	1
35	INTERMEDIATE WHEEL 2	7411R480	1
36	INTERNAL CIRCLIP B 19 / 1	10207 / 120229105	1
37	INTERNAL CIRCLIP B-28	201704	1
38	KEY_ 6x6x11	420202	1
39	MS WASHRE	120231103	1
40	NEEDLE SLEEVE HK 0810	250901	3
41	NRB _ DL 1012	80420116	1
42	GLAND Pg 9	211309	1
43	PISTON	120231109	1
44	PT - SCREW 50x30	80201411	4
45	RUBBER WASHER 19x11x1.5	120305100	1
46	SELF TAPPING SCREW HC 3.9x65	181732	2
47	SELF TAPPING SCREW HC 4,8x45	201716	4
48	SH GRUB SCREW M8x8	10069	2
49	SH SCREW M5 X16	411707	4
50	SH SCREW M5x20	281701	3
51	SH SCREW M5x8	481705	2
52	SHAFT SEAL RING 7x14x5	83000197	1
53	SMALL BUSH	80420245	2
54	SPLINE SHAFT	7411R490	1
55	SPRING LOADED THRUST PAD M8	85000248	1
56	SPRING WASHER	7411R495	1
57	SPRING WASHER M5	111708100	7
58	WAVE WASHER M4 TYPE B (421704 / 80201385)		4
59	WORK SPINDLE	7412K420	1
60	BEARING CAP	140307	1

* PARTS ARE NOT SHOWWN IN FIG.

DRG NO.	REV NO:
481403	D3