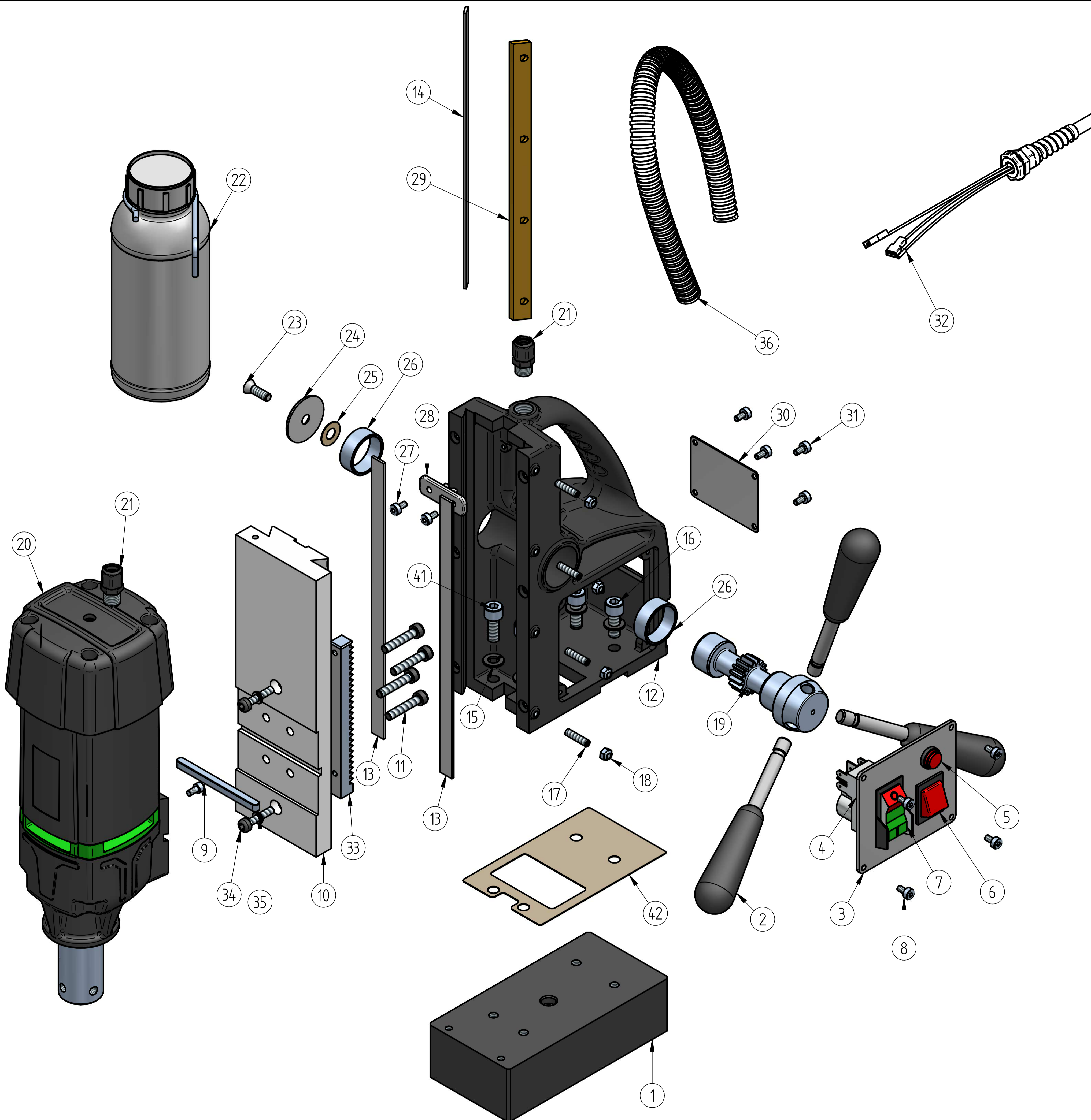


KBM 35 I



Sr.No.	PART NAME	PART No.	QTY
1	BASE SA	219901	1
2	HANDLE LEVER SA	219902	3
3	SWITCH PLATE SA(219905)	219905	1
4	SWITCH PLATE (212001)		1
5	FUSE 8 amp (121317100)		1
6	MAIN SWITCH (101302100)		1
7	POWER PROTECTION SWITCH (101320100)		1
8	SH SCREW M4x8	121761100	4
9	KEY	210215	1
10	GUIDE PLATE	210132	1
11	SH SCREW M6 x 30	101750100	4
12	MAIN BODY SA	219952	1
13	GUIDE STRIP 12mm (210310)		2
14	GUIDE STRIP 8mm (210311)		1
15	SPRING WASHER M8	101710100	4
16	SH SCREW M8 x 25	121756100	2
17	SCH GRUB SCREW M5 x 20	211701	4
18	LOCK NUT M5	101760100	4
19	SPINDLE	210202	1
20	DRILL UNIT	219953	1
21	GLAND PG9	211309	2
22	COOLANT BOTTLE SA	219912	1
23	COUNTERSUNK SCREW M6 x 16	211705	1
24	SPINDLE CAP	210217	1
25	LOCK FOIL	210301	1
26	SPINDLE BUSH	210203	2
27	SH SCREW M4x8	121761100	2
28	CORD CLAMP	210406	1
29	GIB	210501	1
30	SPEC PLATE	211452	1
31	SH SCREW M4x8	121761100	4
32	SPIRAL GLAND	109909102	1
33	RACK	210201	1
34	SH SCREW M5 X 25	121763100	2
35	INT. TOOTH LOCK WASHER (M5)	101739100	2
36	CABLE CONDUIT FOR PG9	211306	1
37	BRIDGE RECTIFIER *	211310	1
38	BELT CLAMP SA *	219911	1
39	GUIDE PIN 8 MM *	100211200	1
40	GUIDE PIN 6 MM *	100212100	1
41	SH SCREW M8 x 20	101708100	2
42	MAIN BODY GASKET	210318	1

PART NOT SHOWN - *

PART NO.	REV:
211451	3