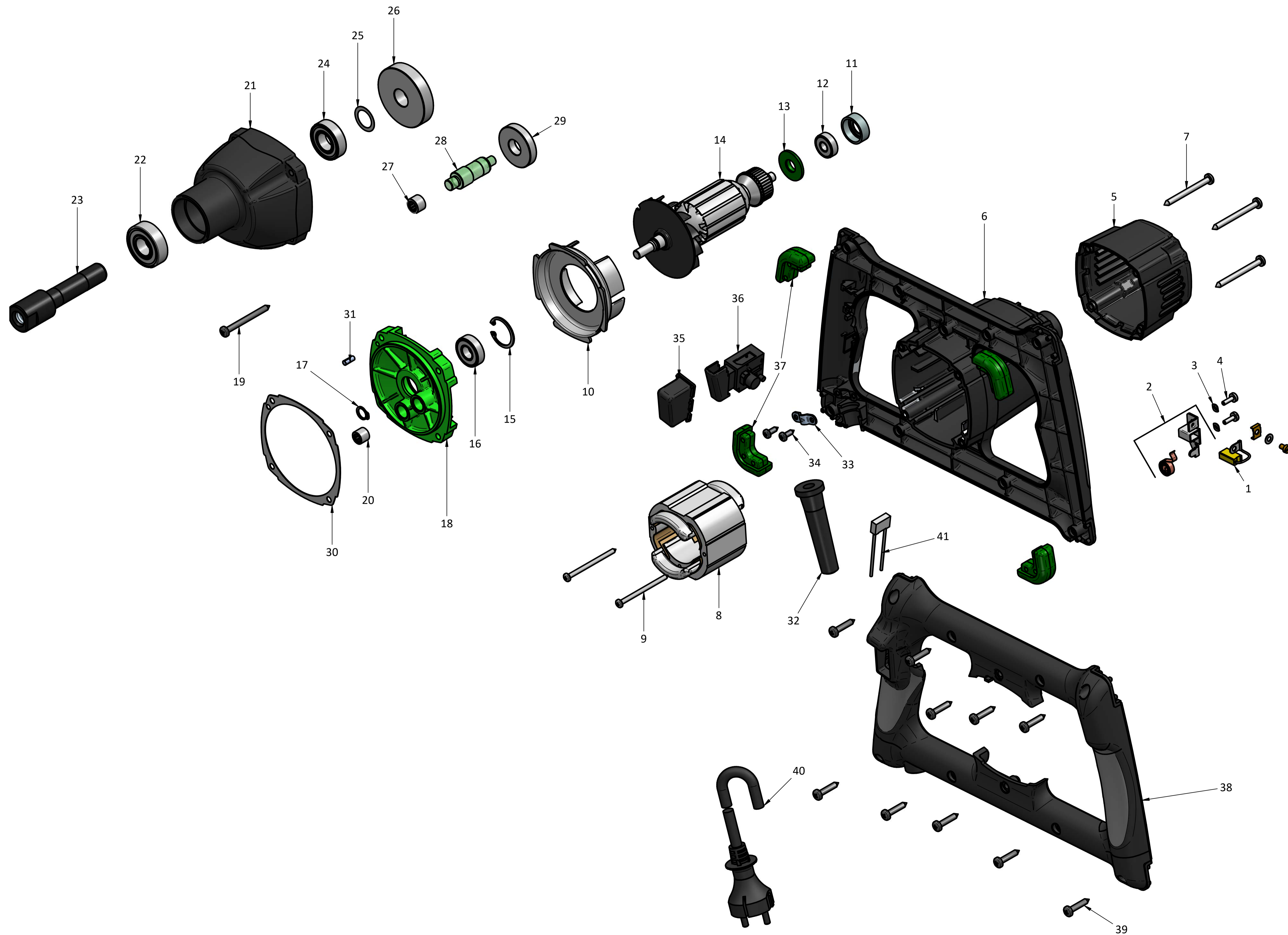


PAINT MIXER MXT 101



PART NO. 311448	REV: 2
--------------------	-----------

MXT 1300 230V

15.5.2024

Sr.No.	Part Name	Part No	Qty
1	Carbon Brush SA	580700013	2
2	Brush Holder SA	209902	2
3	Wave washer M4 type B	421704	4
4	CH screw M4x12	161710100	4
5	Back cover	210420	1
6	Field Case	771I7200	1
7	Phillip head self tap screw 4.8x55	311701	4
8	Field SA	319985	1
9	CH self tap screw 3.9x60	201703	2
10	Baffle	7732Y140	1
11	Bearing cap	771C6315	1
12	Ball Bearing (8-22-7) 608 2Z	110902101	1
13	Dust washer	200404	1
14	Armature SA	7731S100	1
15	Circlip 28mm x 1.2 B TYPE	201704	1
16	Ball Bearing (12-28-8)6001 ZZ	190901	1
17	Circlip A10	111713100	1
18	GC Cover (GREEN)	120190100	1
19	Phillip head self tap screw 4.8x45	201716	4
20	NRB 8-12-10 HK810	250901	1
21	Gear case,black colour	940102	1
22	Ball bearing 6203 2 RS _17-40-12	190903	1
23	Spindle	7731C420	1
24	Bearing 6003 2 RS _17-35-10	190905	1
25	Washer 17/22 x 0.2	311707	1
26	Spindle Gear	7731N430	1
27	NRB HK1010	310901	1
28	Shaft With Pinion	7731N490	1
29	Intermediate Gear	7731N470	1
30	Gasket	120307100	1
31	Dowel 4 X 12	211723	1
32	Cord protector	71323255	1
33	Cord clamp	140405	1
34	ST 4.2 x 10	181711	2
35	Dirt protection cap	77420365	1
36	Switch	80600527	1
37	Buffer pair set 1 and 2	771I7594	1
38	Handle cover	771I7260	1
39	ST 4.8 x 25	191724	10
40	Cable SA (2 Corex1mm2x3.1 Mtr.)	319903	1
41	Supressor (0.47 μ Fx2)	111306101	1