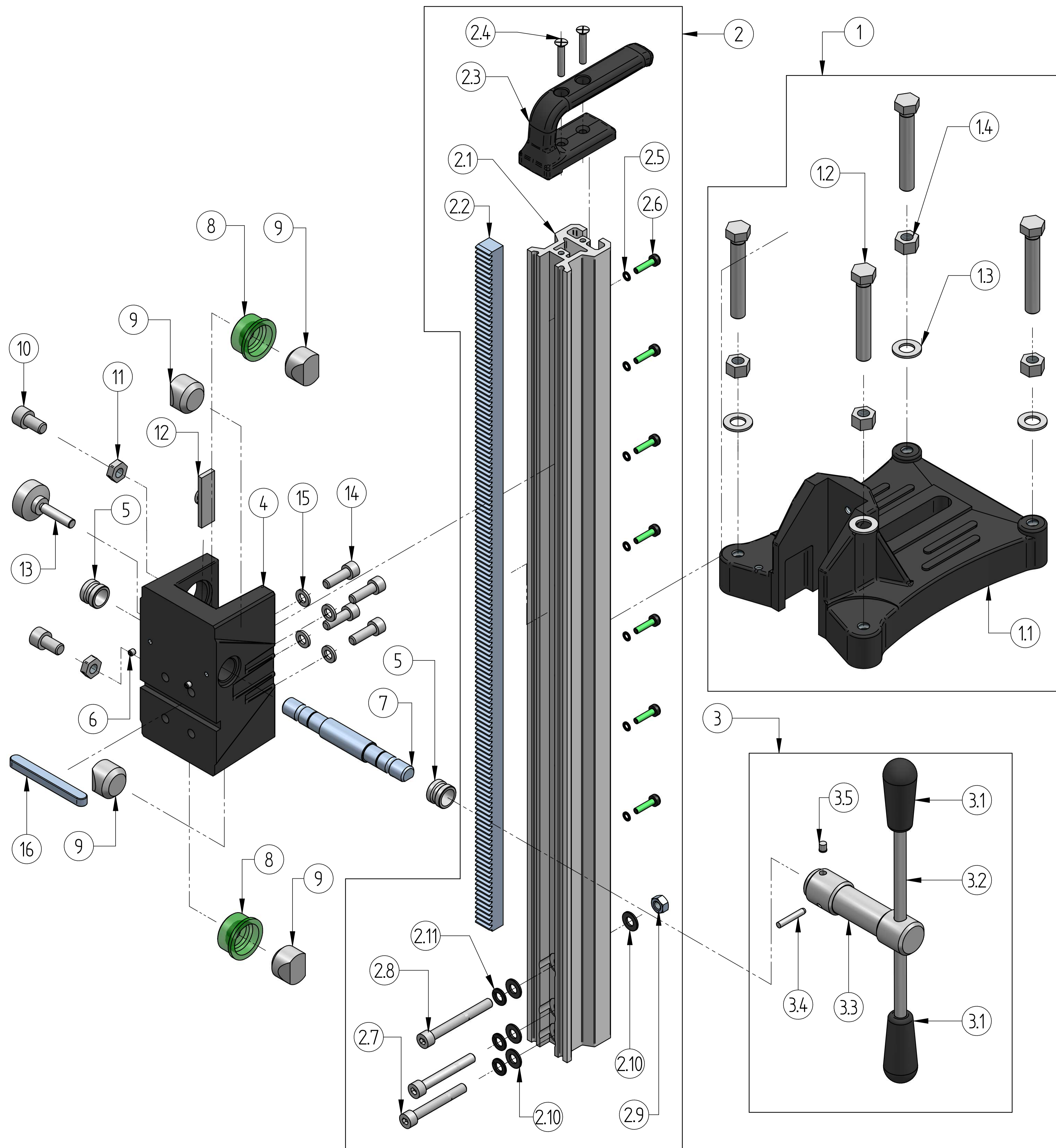


PDB200 FOR MANUFACTURING



S. N.	Part Name	Part No	Qty
1	Base SA	299923	1
1.1	Base for fixed column (796UN886FT)		1
1.2	Hex bolt M12x90 (291706)		4
1.3	Washer $\Phi 13 \times \Phi 24 \times 2$ (291711)		4
1.4	Hex Nut M12 (291710)		4
2	Rack SA	299934	1
2.1	Rack column machining (290114)		1
2.2	Rack ST (290267)		1
2.3	Main Handle (290115)		1
2.4	Countersunk screw M6x30 (211714)		2
2.5	Int. tooth lock washer M5	101739100	7
2.6	SH screw M5 X 20	281701	7
2.7	SH M8x60 (191722)		2
2.8	SH M8x70 (291721)		1
2.9	Hex nut M8 (101728100)		1
2.10	M8 Washer (371701)		4
2.11	M8 Spring washer (101710100)		3
3	Handle lever shaft SA	299921	1
3.1	Handle (280403)		2
3.2	Handle lever (290207)		1
3.3	Lever shaft (290105)		1
3.4	Dowel $\Phi 5 \times 25$ (291735)		1
3.5	Ball plunger $\phi 6$ (291705)		1
4	Machine Holder machining	796UN791	1
5	Bush	290205	2
6	Grub Screw M5X5	181720	2
7	Pinion Shaft	796UN730	1
8	Threaded bush	796DE766	2
9	Guide cone	290407	4
10	SH M10 X18	291713	2
11	Hex Nut M10 DIN 936 flat	291714	2
12	Flash clamp	796UN779	1
13	Button M8 X 30	291712	1
14	SH M8 X 25	101712100	4
15	Spring Washer M8	101710100	4
16	key (10x8x85)	291723	1