

# ETC-125 E1

Super Cutter



**EIBENSTOCK**  
P O S I T R O N



Continuous cutting depth adjustment without the need for tools - until 36 mm immersion Function

## Use

- Wet and Dry cutting of different stones, e.g. natural stone, stoneware
- Cutting of tiles, plates, wood & plywood
- Joint milling
- Curved cuts (with corresponding diamond blades)
- Tilers and pavers

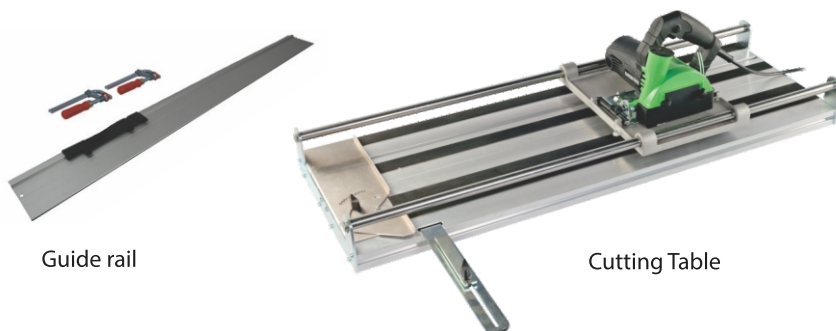
## Features

- Mitre adjustment (stepless up to 45°) and cutting depth adjustment (stepless up to 36 mm) without the need for tools
- Immersion function
- Roller guided plate – smooth guiding, protects the surface
- Nozzle diameter Ø 35 mm – connection to industrial vacuum cleaner
- Guide rail – optional accessory for precise cuts
- Cutting table - ETT 700 / 1200 optional accessory for precise cut



Mitre adjustment without the need for tools - from 0 to 45°

Also available in basic Model without roller & wheel guard  
Model : ETC-125 - E2



Guide rail

Cutting Table

Specification	ETC-125 E1 & E2
Input Supply Voltage (V)	220 - 240
Power Input (W)	1250
Max Disc Diameter	125 mm
Max Cutting Depth (mm)	39.5
No Load Speed (RPM)	12500
Bevel Cutting Angle	0 - 45°
Weight	2.9 kg

\* Cutting Blade not part of standard accessory

