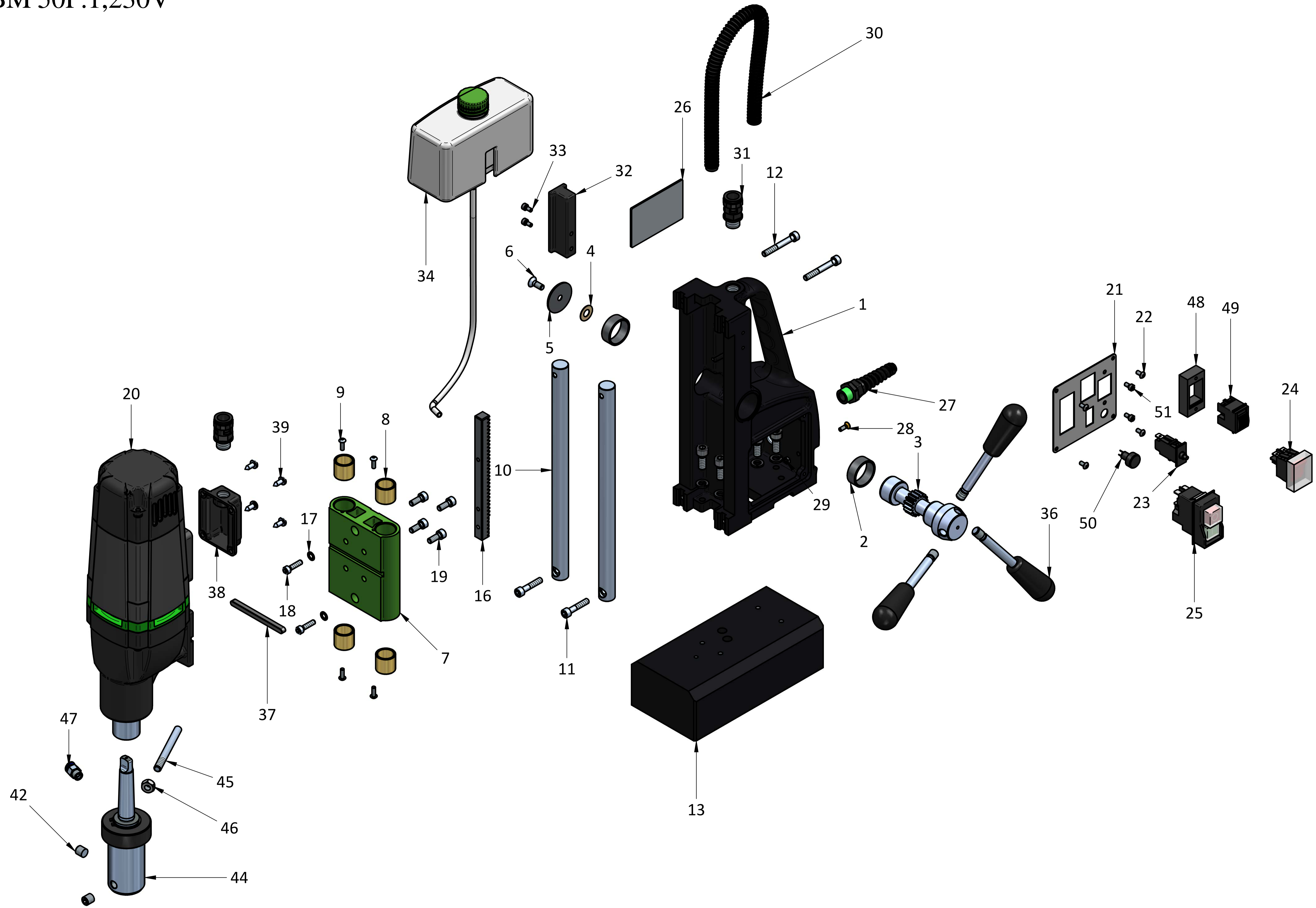


KBM 50P.1,230V



☆ PARTS NOT SHOWN IN FIG.

PART NO.	REV:
711432	1

Sr. No	Part Name	Part No	Qty
1	MAIN BODY MACHINING	710115	1
2	SPINDLE BUSH (210203)		2
3	PINION SHAFT	210202	1
4	LOCK FOIL	210301	1
5	SPINDLE CAP	210217	1
6	CS SCREW M6 x 16	211705	1
7	GUIDE BED MACHINING	710125	1
8	GUIDE BUSH (710501)		4
9	SBHC SCREW M4X12 _ DIN EN ISO 7380	101705100	4
10	GUIDE BAR	710223	2
11	SH SCREW M6 X 30	101750100	2
12	SH SCREW M6 X 45	151701100	2
13	BASE SA	719917	1
14	SPRING WASHER M6	101702100	4
15	SH SCREW M6 X 25	121756100	4
16	RACK	710225	1
17	INTERNAL TOOTH LOCK WAHSER M5	101739100	2
18	SH SCREW M5 X 20	281701	2
19	SH SCREW M6 X 16	101701100	4
20	DRIVE UNIT KBM 40P	719929	1
21	SWITCH PLATE	711434	1
22	HSBH SCREW M4X8	591710	4
23	OVER LOAD PROTECTION SWITCH 5AMP.	531302	1
24	DUST PROOF ROCKER SWITCH	211313	1
25	POWER PROTECTION SWITCH	101320100	1
26	SPECIFICATION PLATE	711435	1
27	SPIRAL GLAND M16	109909102	1
28	CS BRASS SCREW M4 X 12	531702	1
29	HEX NUT M4	101728100	1
30	CABLE CONDUIT	211306	0.3
31	GLAND PG9	211309	2
32	BOTTLE CLAMP	530431	1
33	SH M4 X 8	121761100	2
34	COOLANT BOTTLE SA	539958 SA	1
35	1/8" BSP CONNECTOR *	211727	1
36	HANDLE LEVER SA	539903	3
37	KEY 6 X 6 X 80	210215	1
38	SIDE CAP	710408	1
39	ST 4.8 X 13	711709	4
40	3 PIN 16AMP POWER CORD CE-1SQMM X3CORE X 3.1 MTR*	721301	1
41	RUBBER RING *	710302	4
42	GRUB SCREW M10 X 10	101743100	2
43	BRIDGE RECT. DIODE*	211315	1
44	MT 2 SLEEVE SA KBM 50P.1, TAP MASTER	719930	1
45	RETAINER M8 X 80	120279100	1
46	NUT M8	101729100	1
47	1/4 BSP CONNECTOR	121758100	1
48	SWITCH BOX	221302	1
49	REVERSE FORWARD SWITCH	221301	1
50	SPEED SWITCH	73114300	1
51	SH SCREW M4 X 8	121761100	2
52	STOPPER *	710271	1