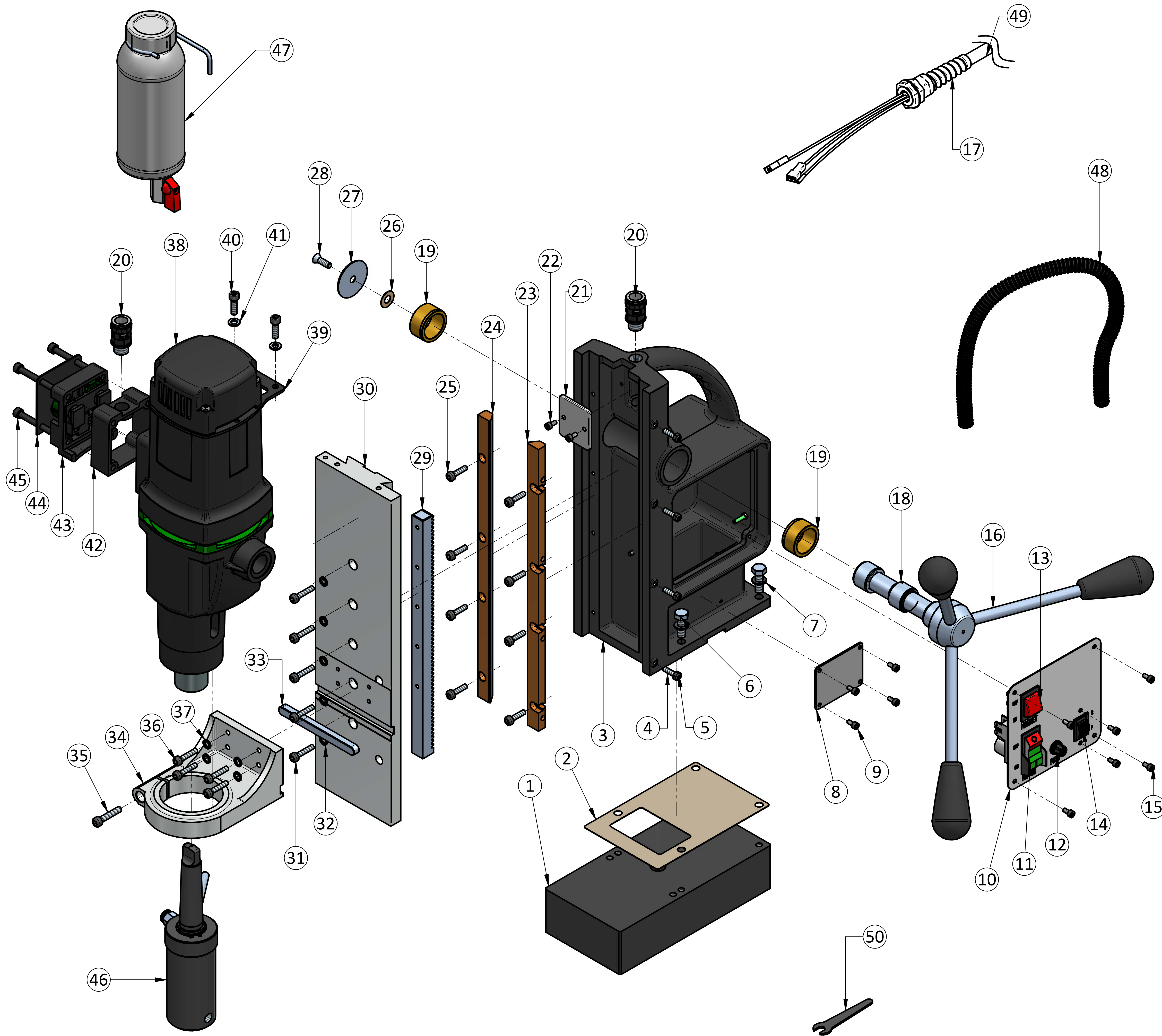


KBM 90



Sr.No.	Part Name	Part No	Qty
1	Base SA	289917	1
2	Main body gasket	280304	1
3	Main Body Machining	790101	1
4	SHC Grub Screw M5 x 25 _Round End	101703100	4
5	Nut M5	101760100	4
6	Hex Head M8x25	281706	4
7	M8 Spring washer	101710100	4
8	Instruction plate	282005	1
9	SHC screws M4x8	121761100	4
10	Switch Plate	790203	1
11	Power protection switch (CE CERTIFIED)	101320100	1
12	Fuse 15 amp	281304	1
13	Rocker Switch with dust protection cap	211313	1
14	Reverse forward switch	221301	1
14.1	Rev- forward switch box (221302)*		1
15	SHC screws M4x8	121761100	6
16	Handle lever SA	289904	3
17	Spiral Gland	109909102	1
18	Spindle	280202	1
19	Spindle Bush	280203	2
20	PG9 gland	211309	2
21	Cord clamp	280402	1
22	SHC screws M4x8	121761100	2
23	Gib Right side	280115	1
24	Gib Left side	280114	1
25	SH screw M5 x 20	281701	8
26	Lock Foil	210301	1
27	Spindle cap	280208	1
28	Spindle Lock countersunk screw M6 x 15	211705	1
29	Rack	280250	1
30	Guide Bed machining	790102	1
31	SH Screw M5 X 25	121763100	5
32	Int.tooth lock washer M5	101739100	5
33	Key	280206	1
34	Drill holder SA	289919	1
35	SHC screw M6 x 30	101750100	1
36	SH Screw M5 X 25	121763100	4
37	internal tooth lock washer M5	101739100	4
38	Drill unit	EHB32 2.2 R/RL	1
39	Back cover supporter	100238100	1
40	SH Screw M6 X 20	101755100	2
41	Spring washer M6	101702100	2
42	speed switch holder	400401	1
43	Speed & Power Selection Switch	221303	1
44	Speed Switch cover Plate	221304	1
45	SHC screw M6 x 60	101765100	4
46	MT3 Sleeve SA 32 Weldon	799901	1
47	Coolant Bottle SA	129935100	1
48	Cable conduit	211306	0.6 MTR
49	3 PIN 16AMP Power Cord CE-1.5 SQMM X 3core X 3.1 MTR	721302	1
50	M5 Hex Spanner	210238	1
51	20 UNF Drill Chuck Adaptor 19 mm Weldon*	210243FS	1
52	MT3 Sleeve SA 19 Weldon*	799903	1
53	Guide pin 8 X 155*	280249	1
54	Guide pin 8 X 171*	280261	1
55	Guide pin 6 X 104*	100212100	1
56	Guide pin 8 X 105*	100211200	1
57	Guide pin 6 X 118*	280248	1
58	Belt clamp SA *	219911	1
59	Drift MT3*	102007100	1
60	Accessories pouch SA*	101418100	1
61	operating manual*	411402	1
62	Bridge rect. Circuit *	781307	1

* - NOT SHOWN IN SHEET

PART NO.	REV:
791401	0